

Raso Helen Stretch

ABBIGLIAMENTO CLOTHING FABRICS
FODERA LINING



Colori Colors



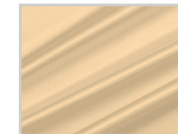
300 bianco
white



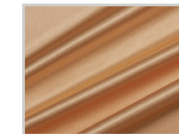
299 bianco seta
white silk



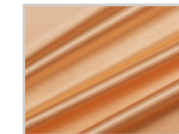
301 panna
cream



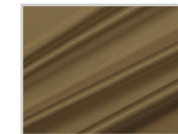
336 beige
beige



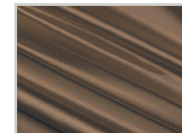
353 oro
gold



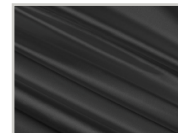
354 cammello
camel



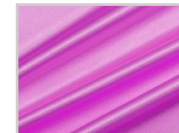
347 tortora
dove grey



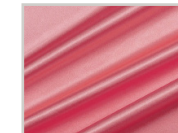
339 fango
mud



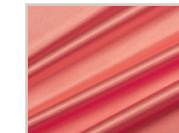
345 grigio scuro
dark grey



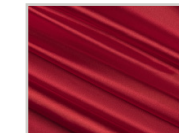
340 fuxia
fuxia



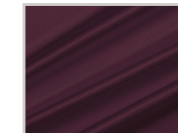
400 rosa
pink



352 corallo
coral



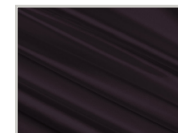
303 rosso
red



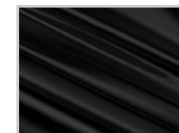
342 bordeaux
bordeaux



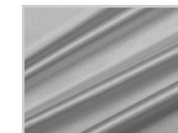
343 violetto
violet



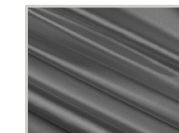
319 melanzana
aubergine



313 nero
black



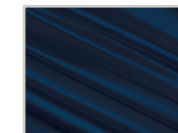
344 grigio perla
pearl grey



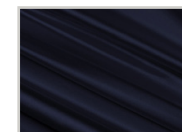
357 grigio medio
medium grey



338 bluette
bluette



346 blu medio
medium blue



312 blu
blue



349 turchese
turquoise



348 smeraldo
emerald

Composizione Composition

97 % Poliestere
Polyester

3 % Elastan
Elastane

Altezza
Width **150 cm**

Peso
Weight **93 gr/m²**

Pezze
Pieces **10 mt**



Contact us to order

Manifattura Foderami Cimmino srl

Tel. +39 081 5108534

Fax +39 081 5109154

Email ciao@cimmino.com

Web www.cimmino.com

Address CIS Isola 5, 80035 NOLA (ITALY)