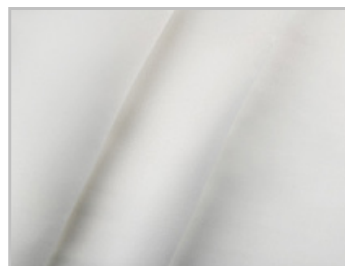


Raso Duchesse Color

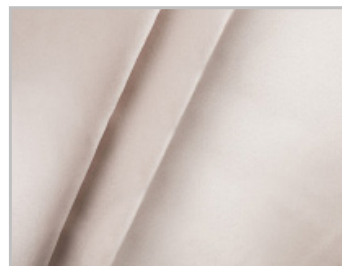
TESSUTI ABBIGLIAMENTO CLOTHING FABRICS
SPOSA E CERIMONIA BRIDAL & WEDDING



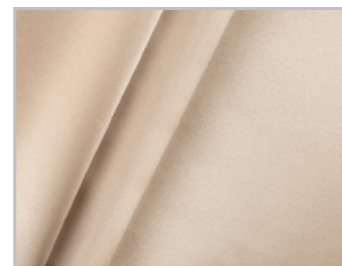
Colori Colors



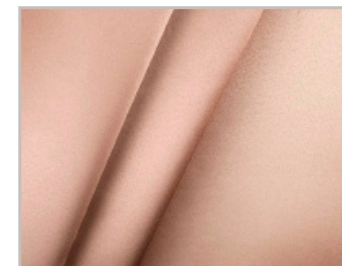
51 bianco seta
silk white



21 crema
cream



247 carne
skin



226 rosa
pink

Composizione Composition

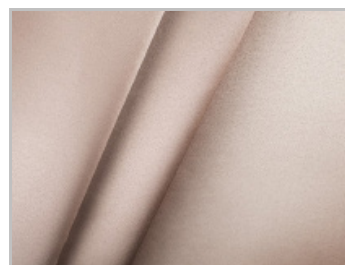
100 %

Poliestere
Polyester

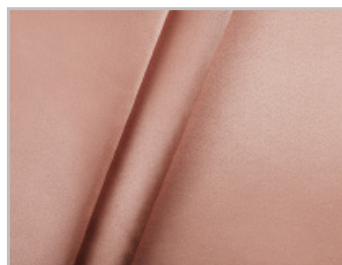
Altezza
Width **150 cm**

Peso
Weight **170 gr/m²**

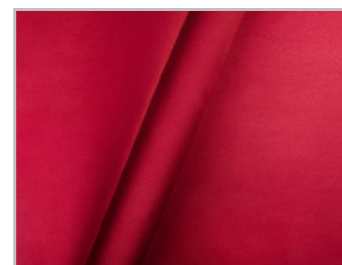
Rotoli
Rolls **10 - 50 mt**



905 rosa antico
pink



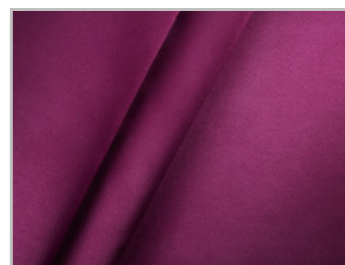
258 cipria
powder



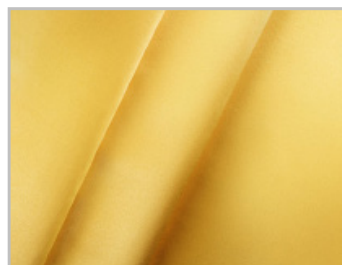
13 rosso
red



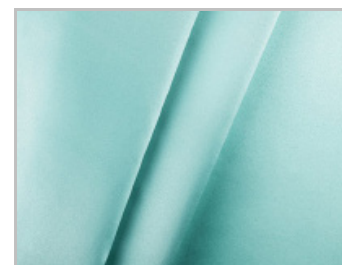
46 fucsia
fuchsia



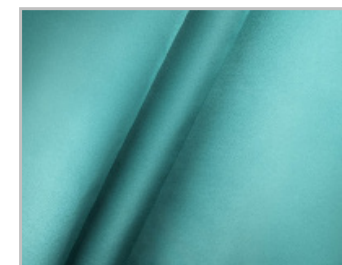
556 bordeaux
bordeaux



15 giallo
yellow



142 verde tiffany
tiffany green



88 verde acqua
green water

Contact us to order

Manifattura Foderami Cimmino srl

Tel. +39 081 5108534

Fax +39 081 5109154

Email ciao@cimmino.com

Web www.cimmino.com

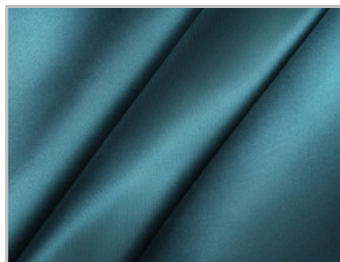
Address CIS Isola 5, 80035 NOLA (ITALY)

Raso Duchesse Color

TESSUTI ABBIGLIAMENTO CLOTHING FABRICS
SPOSA E CERIMONIA BRIDAL & WEDDING



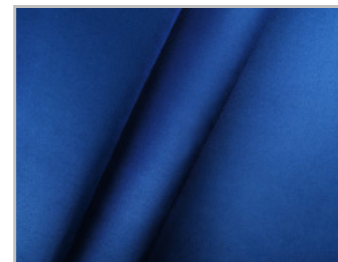
Colori Colors



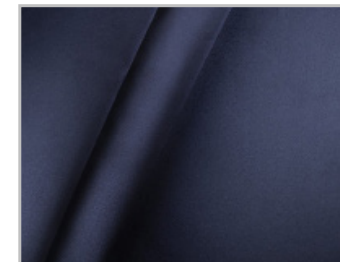
437 verde scuro
dark green



20 azzurro
light blue



22 blueette
blueette



107 blu scuro
dark blue

Composizione Composition

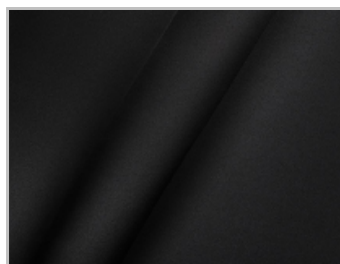
100 %

Poliestere
Polyester

Altezza
Width **150 cm**

Peso
Weight **170 gr/m²**

Rotoli
Rolls **10 - 50 mt**



900 nero
black

Contact us to order

Manifattura Foderami Cimmino srl

Tel. +39 081 5108534

Fax +39 081 5109154

Email ciao@cimmino.com

Web www.cimmino.com

Address CIS Isola 5, 80035 NOLA (ITALY)