

**cimmino**  
Your partner in style since 1750.

*La migliore selezione  
di tessuti per la*

**CAMICERIA**



**Collezione 2022**

[cimmino.com](http://cimmino.com)



**Manifattura Foderami Cimmino**

Cis Isola 5  
80035 Nola (ITALY)  
tel. +39 081 5108534  
fax +39 081 5109154  
e-mail: [ciao@cimmino.com](mailto:ciao@cimmino.com)

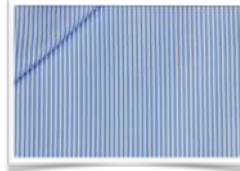
TESSUTO CAMICERIA ABINGTON

COMPOSIZIONE COMPOSITION:

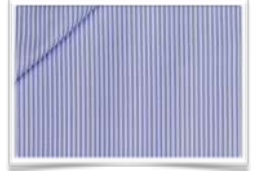
55% Poliestere Polyester 45% Cotone Cotton

ALTEZZA WIDTH: 150 cm PESO WEIGHT: 129 gr/mq

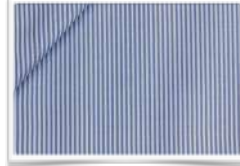
PEZZE PIECES: 7 mt



701 CELESTE



702 BLUETTE



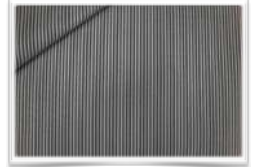
703 BLU



801 BLU SCURO



1107 NERO



110 VIOLETTO



1102 BLUETTE



1105 ROSSO



1002 BLUETTE



1001 CELESTE



903 BLU SCURO



1101 CELESTE



1106 MARRONE



1003 BLU SCURO



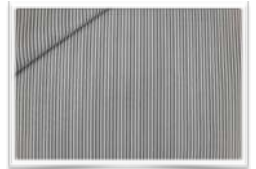
902 BLUETTE



901 CELESTE



1103 BLU



1104 GRIGIO





TESSUTO CAMICERIA BANBURY

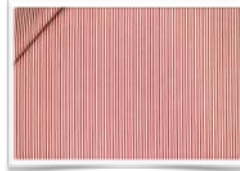
COMPOSIZIONE COMPOSITION:  
100% Cotone Cotton

ALTEZZA WIDTH: 150 cm PESO WEIGHT: 105 gr/mq

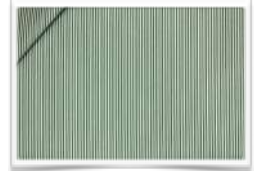
PEZZE PIECES: 7 mt



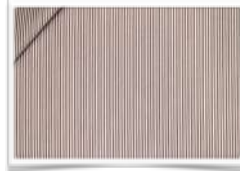
401 CELESTE



604 ROSSO



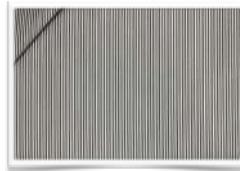
605 VERDE



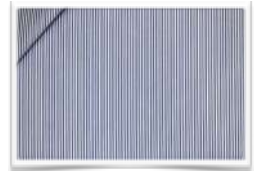
606 MARRONE



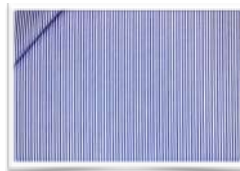
607 GRIGIO



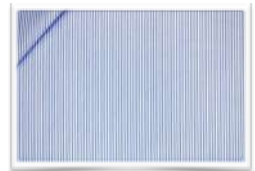
608 NERO



603 BLU SCURO



602 BLUETTE



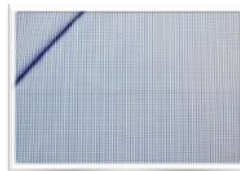
601 CELESTE



402 BLUETTE



302 BLUETTE



501 CELESTE



201 CELESTE



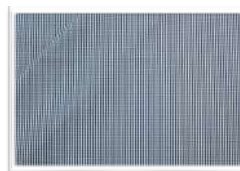
202 BLUETTE



102 BLUETTE



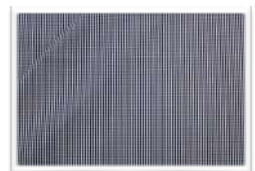
101 CELESTE



502 BLUETTE



301 CELESTE



503 BLU SCURO



## FIL A FIL LONDRA SANFORIZZATO

COMPOSIZIONE COMPOSITION:  
100% Cotone Cotton

ALTEZZA WIDTH: 150 cm PESO WEIGHT: 115 gr/mq  
PEZZE PIECES: 15 mt



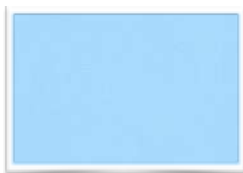
## CAMICERIA OXFORD CARDIFF SANFOR

COMPOSIZIONE COMPOSITION:  
100% Cotone Cotton

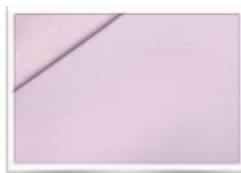
ALTEZZA WIDTH: 150 cm PESO WEIGHT: 133 gr/mq  
PEZZE PIECES: 7 mt



244 ROSA



440 CELESTE



294 ROSA



1 BIANCO



446 AZZURRO



1 BIANCO



408 CELESTE





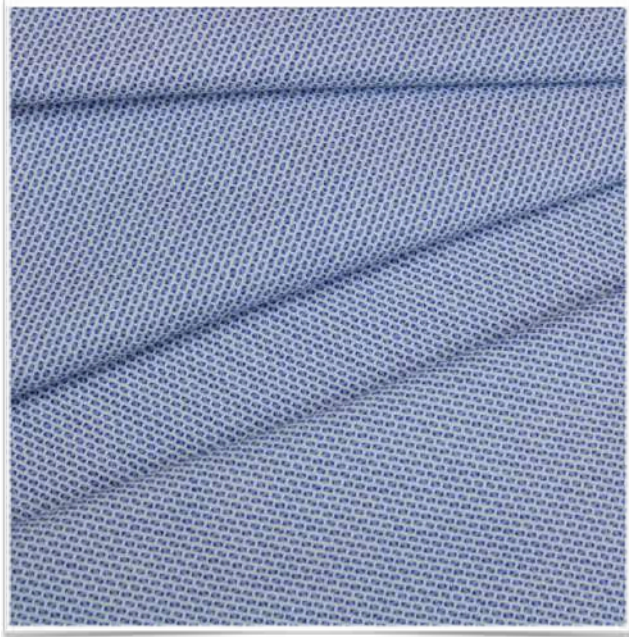
## TESSUTO CAMICERIA BRISTOL

**COMPOSIZIONE COMPOSITION:**

55% Poliestere Polyester 45% Cotone Cotton

**ALTEZZA WIDTH:** 150 cm **PESO WEIGHT:** 105 gr/mq

**PEZZE PIECES:** 7 mt



31 BIANCO



34 BLU SCURO



11 BIANCO



13 AZZURRO



33 BLUETTE



32 CELESTE



12 CELESTE



54 BLU SCURO



51 BIANCO



52 CELESTE

## TESSUTO CAMICERIA CROWLEY

**COMPOSIZIONE COMPOSITION:**

55% Poliestere Polyester 45% Cotone Cotton

**ALTEZZA WIDTH:** 148 cm **PESO WEIGHT:** 136 gr/mq

**PEZZE PIECES:** 7 mt

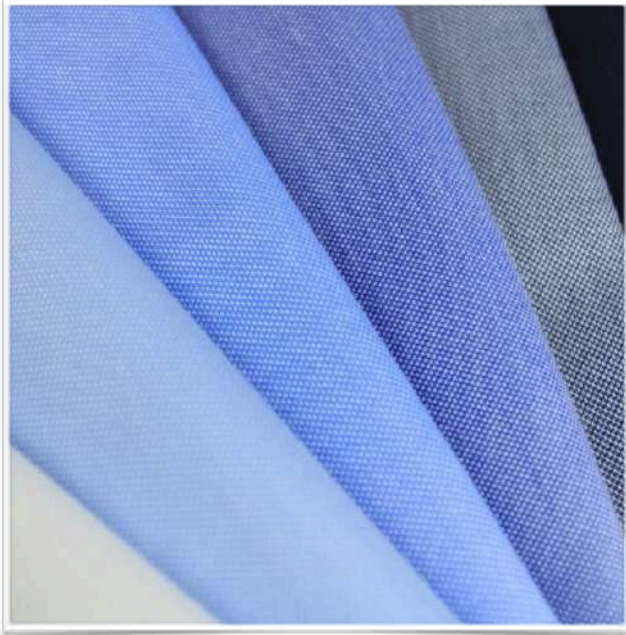




## TESSUTO CAMICERIA KINGSTON

**COMPOSIZIONE COMPOSITION:**  
100% Cotone Cotton

**ALTEZZA WIDTH:** 148 cm **PESO WEIGHT:** 158 gr/mq  
**PEZZE PIECES:** 7 mt



26 BLUETTE



21 BIANCO



25 AZZURRO



24 CELESTE



27 BLU



28 BLU SCURO



23 MARRONE

## TESSUTO CAMICERIA DANDY

**COMPOSIZIONE COMPOSITION:**  
55% Poliestere Polyester 45% Cotone Cotton

**ALTEZZA WIDTH:** 148 cm **PESO WEIGHT:** 150 gr/mq  
**PEZZE PIECES:** 7 mt



2 CELESTE



1 BIANCO



3 AZZURRO



# CAMICERIA POPELIN STRETCH

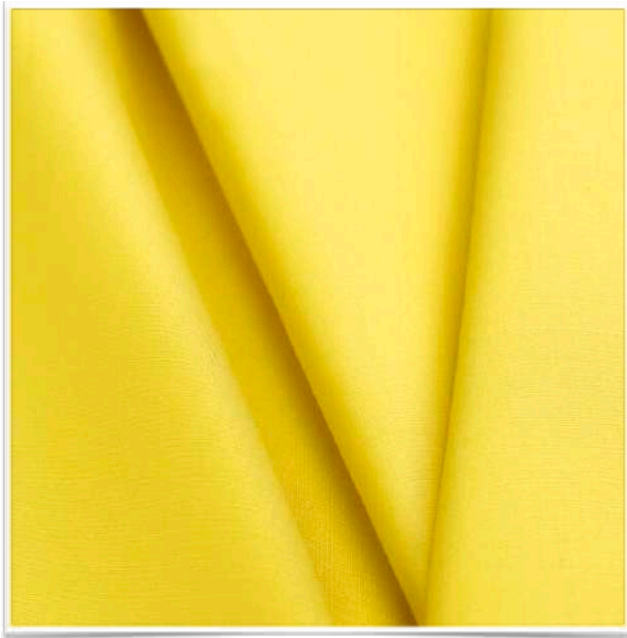
## CAMICERIA POPELIN STRETCH

### COMPOSIZIONE COMPOSITION:

97% Cotone Cotton 3% Elastan Elastane

ALTEZZA WIDTH: 145 cm PESO WEIGHT: 121 gr/mq

PEZZE PIECES: 10 mt



11 BIANCO



31 TURCHESE



34 GIALLINO



35 GIALLO



24 BLU



6 ROSSO



22 NERO



36 AZZURRO



33 FRAGOLA



32 CORALLO





# CAMICERIA POPELIN EGITTO

## CAMICERIA POPELIN EGITTO

**OEKO-TEX® STANDARD 100**

**COMPOSIZIONE COMPOSITION:**  
100% Cotone Cotton

**ALTEZZA WIDTH:** 150 cm **PESO WEIGHT:** 121 gr/mq  
**PEZZE PIECES:** 20 mt



530 BEIGE



810 GRIGIO CHIARO



104 AZZURRO



112 BLU SCURO



814 GRIGIO SCURO



1 NERO



103 PANNA



102 CELESTE



105 VERDINO



106 GIALLINO



100 ROSA



101 CELESTE CHIARO





**Manifattura Foderami Cimmino**

Cis Isola 5  
80035 Nola (ITALY)  
tel. +39 081 5108534  
fax +39 081 5109154  
e-mail: [ciao@cimmino.com](mailto:ciao@cimmino.com)