

cimmino
Your partner in style since 1750.

*La migliore selezione
di tessuti per la*

CAMICERIA



Collezione 2022

cimmino.com



Manifattura Foderami Cimmino

Cis Isola 5
80035 Nola (ITALY)
tel. +39 081 5108534
fax +39 081 5109154
e-mail: ciao@cimmino.com

Novità

TESSUTO CAMICERIA BRADFORD

COMPOSIZIONE COMPOSITION: 100% Lino Linen

ALTEZZA WIDTH: 145 cm PESO WEIGHT: 120 gr/mq PEZZE PIECES: 7-12 mt



14 SALMONE



1 BIANCO



2 CELESTE



3 AZZURRO



5 BEIGE



15 TIFFANY



16 TURCHESE



9 GIALLO



18 BLU



20 NERO

Novità

TESSUTO CAMICERIA BELFAST

COMPOSIZIONE COMPOSITION: 100% Cotone Cotton

ALTEZZA WIDTH: 145 cm PESO WEIGHT: 110 gr/mq PEZZE PIECES: 7-12 mt



22 BLU DENIM



21 BLU ACCIAIO

TESSUTO CAMICERIA BANBURY

COMPOSIZIONE COMPOSITION: 100% Cotone Cotton

ALTEZZA WIDTH: 150 cm PESO WEIGHT: 105 gr/mq PEZZE PIECES: 7 mt



401 CELESTE



402 BLUETTE



302 BLUETTE



501 CELESTE



201 CELESTE



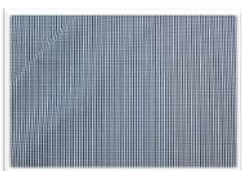
202 BLUETTE



102 BLUETTE



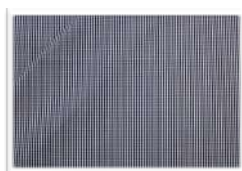
101 CELESTE



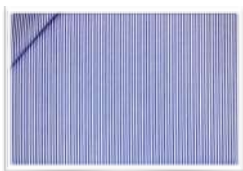
502 BLUETTE



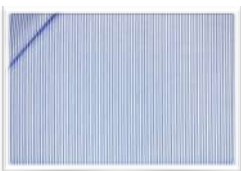
301 CELESTE



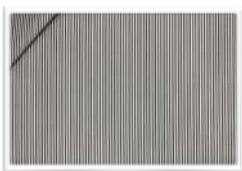
503 BLU SCURO



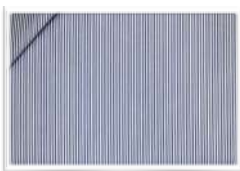
602 BLUETTE



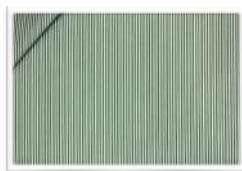
601 CELESTE



608 NERO



603 BLU SCURO



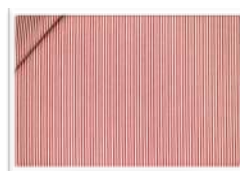
605 VERDE



606 MARRONE



607 GRIGIO



604 ROSSO

Novità

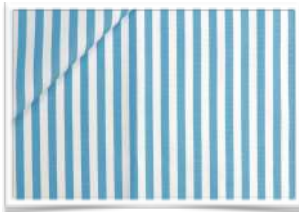
TESSUTO CAMICERIA BANBURY STRIPES

COMPOSIZIONE COMPOSITION: 100% Cotone Cotton

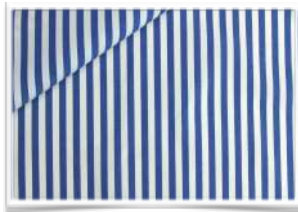
ALTEZZA WIDTH: 150 cm PESO WEIGHT: 105 gr/mq PEZZE PIECES: 7-12 mt



72 BLUETTE



61 CELESTE



62 BLUETTE



64 BEIGE



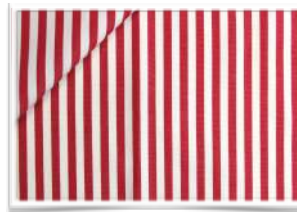
65 NERO



68 ROSA



67 VERDINO



66 ROSSO



69 OLIVA



71 CELESTE



77 VERDINO



79 OLIVA



78 ROSA



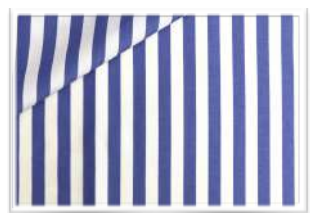
76 ROSSO



75 NERO



74 BEIGE



73 BLU SCURO

Novità

TESSUTO CAMICERIA TAMIGI

COMPOSIZIONE COMPOSITION: 55% Lino Linen 45% Cotone Cotton
ALTEZZA WIDTH: 145 cm **PESO WEIGHT:** 135 gr/mq **PEZZE PIECES:** 7-12 mt



32 BEIGE



31 BIANCO



33 SABBIA



34 TORTORA



48 BLU SCURO



49 NERO



40 CELESTE



41 AZZURRO



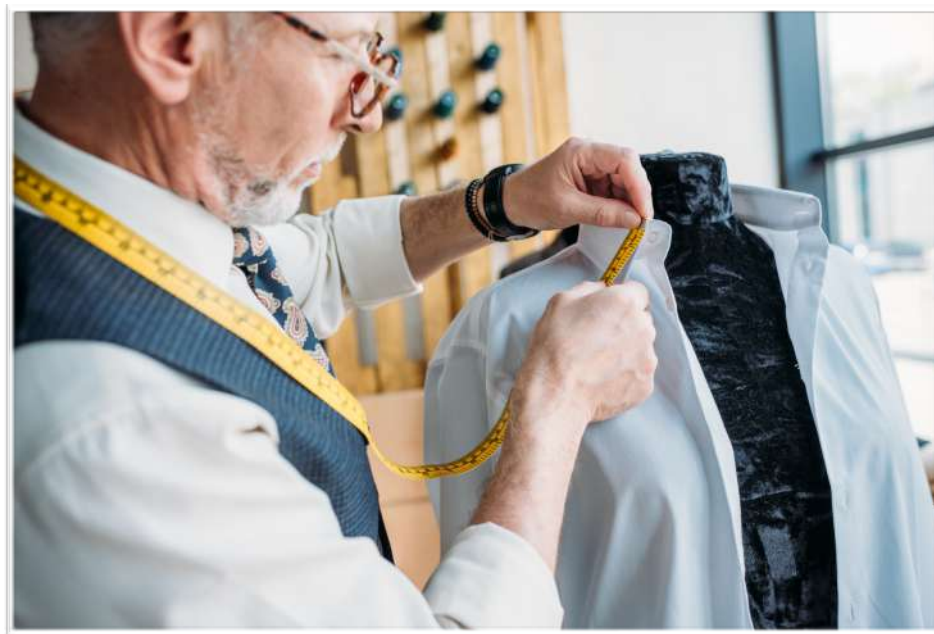
42 ROSA



43 SALMONE



44 GIALLO



TESSUTO CAMICERIA WESTBROOK

COMPOSIZIONE COMPOSITION: 100% Lino Linen

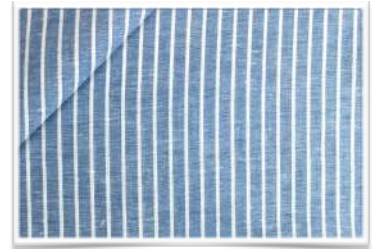
ALTEZZA WIDTH: 145 cm PESO WEIGHT: 120 gr/mq PEZZE PIECES: 7-12 mt



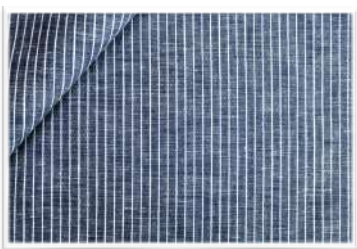
55 BIANCO BLUETTE



50 MARRONE



58 BLU BIANCO



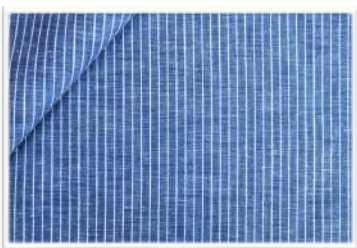
54 BLU



51 NERO



57 BLUETTE BIANCO



53 BLUETTE



52 CELESTE



56 CELESTE BIANCO

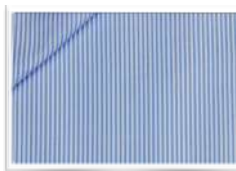
TESSUTO CAMICERIA ABINGTON

COMPOSIZIONE COMPOSITION:

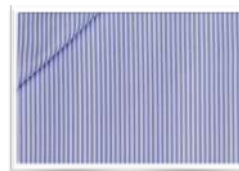
55% Poliestere Polyester 45% Cotone Cotton

ALTEZZA WIDTH: 150 cm **PESO WEIGHT:** 86 gr/mq

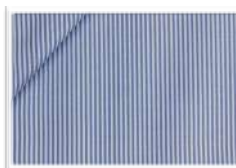
PEZZE PIECES: 7 mt



701 CELESTE



702 BLUETTE



703 BLU



801 BLU SCURO



1107 NERO



802 MARRONE



1102 BLUETTE



1105 ROSSO



1002 BLUETTE



1001 CELESTE



903 BLU SCURO



1101 CELESTE



1106 MARRONE



1003 BLU SCURO



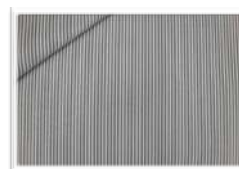
902 BLUETTE



901 CELESTE



1103 BLU



1104 GRIGIO



TESSUTO CAMICERIA BRISTOL

COMPOSIZIONE COMPOSITION:

55% Poliestere Polyester 45% Cotone Cotton

ALTEZZA WIDTH: 150 cm **PESO WEIGHT:** 105 gr/mq

PEZZE PIECES: 7 mt



53 BLUETTE



31 BIANCO



34 BLU SCURO



33 BLUETTE



32 CELESTE



54 BLU SCURO



51 BIANCO



52 CELESTE

TESSUTO CAMICERIA CROWLEY

COMPOSIZIONE COMPOSITION:

55% Poliestere Polyester 45% Cotone Cotton

ALTEZZA WIDTH: 148 cm **PESO WEIGHT:** 136 gr/mq

PEZZE PIECES: 7 mt



11 BIANCO



13 AZZURRO



12 CELESTE



TESSUTO CAMICERIA KINGSTON

COMPOSIZIONE COMPOSITION:

55% Poliestere Polyester 45% Cotone Cotton

ALTEZZA WIDTH: 148 cm **PESO WEIGHT:** 107 gr/mq

PEZZE PIECES: 7 mt



TESSUTO CAMICERIA DANDY

COMPOSIZIONE COMPOSITION:

55% Poliestere Polyester 45% Cotone Cotton

ALTEZZA WIDTH: 148 cm **PESO WEIGHT:** 102 gr/mq

PEZZE PIECES: 7 mt



26 BLUETTE



21 BIANCO



2 CELESTE



1 BIANCO



25 AZZURRO



24 CELESTE



3 AZZURRO



27 BLU



28 BLU SCURO



23 MARRONE



FIL A FIL LONDRA SANFORIZZATO

COMPOSIZIONE COMPOSITION:
100% Cotone Cotton

ALTEZZA WIDTH: 150 cm PESO WEIGHT: 115 gr/mq
PEZZE PIECES: 15 mt



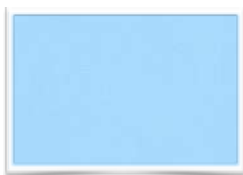
CAMICERIA OXFORD CARDIFF SANFOR

COMPOSIZIONE COMPOSITION:
100% Cotone Cotton

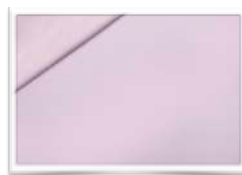
ALTEZZA WIDTH: 150 cm PESO WEIGHT: 133 gr/mq
PEZZE PIECES: 7 mt



244 ROSA



440 CELESTE



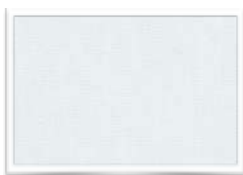
294 ROSA



1 BIANCO



446 AZZURRO



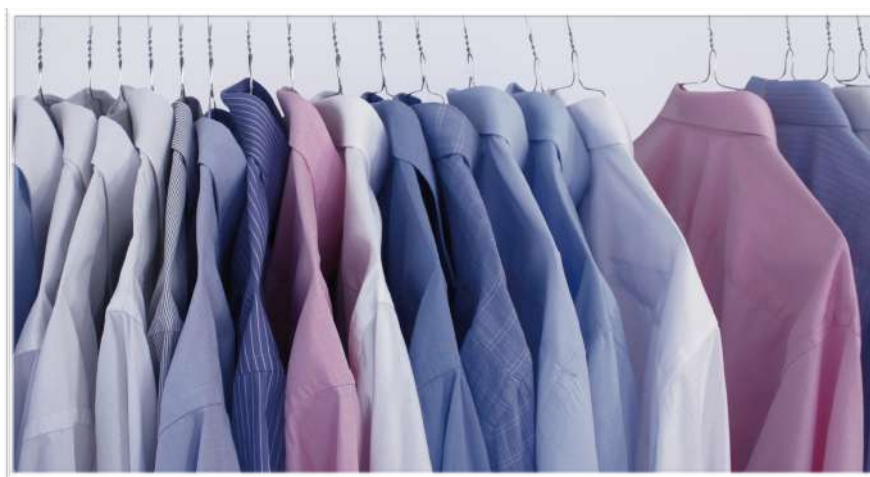
BIANCO



408 CELESTE



439 AZZURRO



CAMICERIA POPELIN EGITTO

OEKO-TEX® STANDARD 100

COMPOSIZIONE COMPOSITION:
100% Cotone Cotton

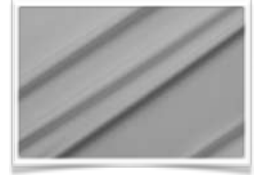
ALTEZZA WIDTH: 150 cm **PESO WEIGHT:** 121 gr/mq
PEZZE PIECES: 20 mt



226 ROSSO



530 BEIGE



810 GRIGIO CHIARO



104 AZZURRO



112 BLU SCURO



814 GRIGIO SCURO



NERO



103 PANNA



102 CELESTE



105 VERDINO



106 GIALLINO



100 ROSA



101 CELESTE CHIARO

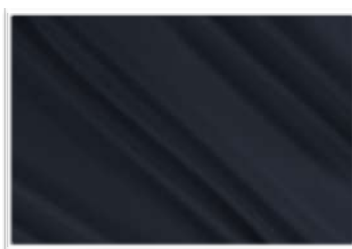


CAMICERIA POPELIN STRETCH

COMPOSIZIONE COMPOSITION: 97% Cotone Cotton 3% Elastan Elastane
ALTEZZA WIDTH: 145 cm **PESO WEIGHT:** 121 gr/mq **PEZZE PIECES:** 10 mt



1 BIANCO



24 BLU



6 ROSSO



31 TURCHESE



22 NERO



36 AZZURRO



cimmino
Your partner in style since 1750.

Chi siamo

E' dal 1750 che trattiamo tessuti; l'abbiamo sempre fatto nella nostra città, Napoli. La nostra esperienza è stata tramandata di generazione in generazione e solo i valori migliori hanno resistito alla prova del tempo.



We have been dealing with fabrics in our town, Naples, since 1750. This is more than a quarter millennium. Our experience has been passed from generation to generation. Only the most important concepts have passed this test of time.



Manifattura Foderami Cimmino

Cis Isola 5
80035 Nola (ITALY)
tel. +39 081 5108534
fax +39 081 5109154
e-mail: ciao@cimmino.com